

Računanje površina parcela iz koordinata

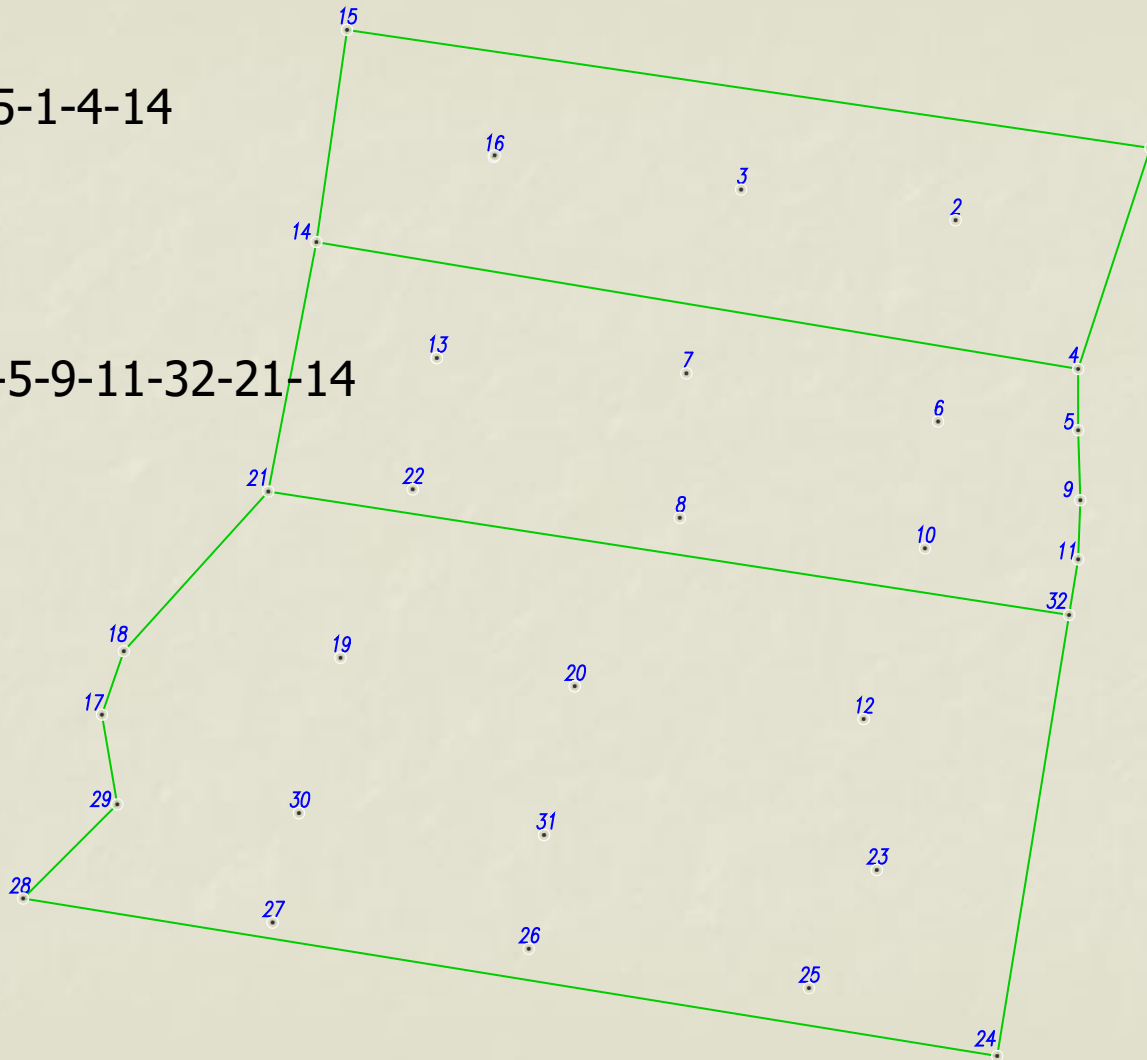
Potrebno je prethodno snimiti sve prelomne tačke granične linije i sračunati njihove koordinate

Snimljena situacija

Parcela 1: 15-1-4-14

Parcela 2: 4-5-9-11-32-21-14

Parcela 3: 32-24-28-29-17-18-21



rb	tačka	Y	X	$x_i^*(y_{i+1}-y_{i-1})$	$y_i^*(x_{i-1}-x_{i+1})$
0		2159.64	4061.05		
1	15	2182.89	4244.59	3048468	204557.6
2	1	2877.84	4154.76	2642154	-810277
3	4	2818.83	3963.03	-2846253	-264151
4	14	2159.64	4061.05	-2582561	608062.1
5		2182.89	4244.59		

$$2P = \sum_{i=1}^n X_i (Y_{i+1} - Y_{i-1})$$

$$P = \frac{1}{2} \sum_{i=1}^n X_i (Y_{i+1} - Y_{i-1})$$

rb	tačka	Y	X	$x_i^*(y_{i+1}-y_{i-1})$	$y_i^*(x_{i-1}-x_{i+1})$
0		2159.64	4061.05		
1	15	2182.89	4244.59	3048468	204557.6
2	1	2877.84	4154.76	2642154	-810277
3	4	2818.83	3963.03	-2846253	-264151
4	14	2159.64	4061.05	-2582561	608062.1
5		2182.89	4244.59		

$$2P = \sum_{i=1}^n Y_i (X_{i-1} - X_{i+1})$$

$$P = \frac{1}{2} \sum_{i=1}^n Y_i (X_{i-1} - X_{i+1})$$